

# visio.lign

Veneering system



## New Products

Implant prosthetics

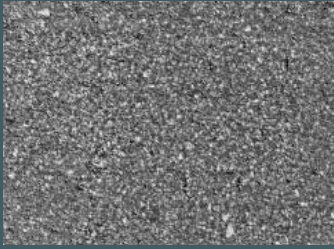
Metal-free restorations

Crowns and bridges

From the setup to the definitive veneer

bredent

# The finishing material crea.lign and crea.lign Modifier

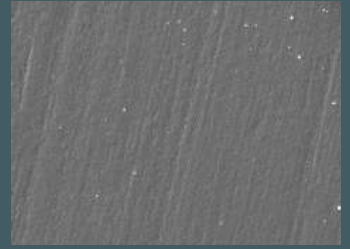


3M ESPE - Sinfonie

crea.lign contains only nanofillers and no ground dental glass.

As a result, unsurpassed polishing properties are obtained. The average surface roughness (Ra) after polishing is 0.03  $\mu\text{m}$ .

This is only one reason for the lasting shade stability and resistance to plaque. More info in our visio.lign courses/workshops, lectures and specialist consultations.



crea.lign

REM-Aufnahmen untersuchter Verblendcomposite im Schlibfbild A. Rzanny, Deutsche Zahnärztliche Zeitschrift 2007, page 738 and crea.lign



Wet the brush



Take up crea.lign



Spread evenly



Individualizing with crea.lign Modifier



Palatal/lingual for free hand modelling



Incisal for layering and characterizing



Approximal and cervical for adding on...



...and red-white esthetics

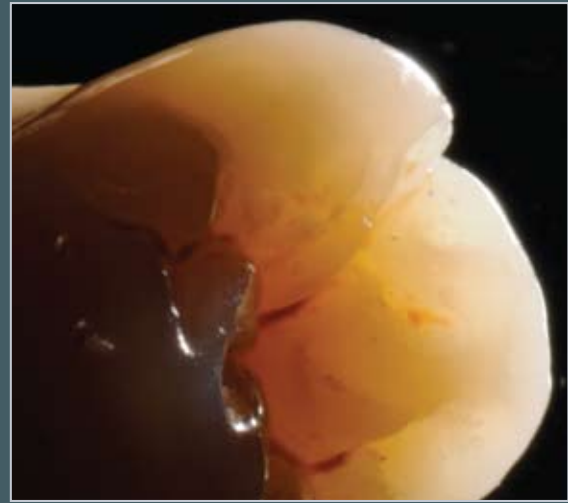
**bredent**

GmbH & Co.KG · 89250 Senden · Germany · Tel. (+49) 0 73 09 / 8 72-4 40 · Fax (+49) 0 73 09 / 8 72-4 44 · www.visio-lign.com · e-mail info@bredent.com

# crea.lign E2, E3 incisal materials and crea.lign stains

The incisal materials E2 and E3 for „free-hand layering“ are added to the crea.lign veneering composite. Moreover, the indication range is extended to include laboratory-made inlays, onlays and veneers.

The opalescent enamel materials are perfectly suited for the „free-hand layering technique“ and finishing of composite veneers. The familiar layering pattern using dentine and incisal can be used.



Lab. Od. Lazetera Antonio - Savona - Italy

Shade classification:

Tooth shade:	Bl3	A1	A2	A3	A3,5	A4	B1	B2	B3	B4	C1	C2	C3	C4	D2	D3	D4
Incisal:	E2	E2	E2	E3	E3	E3	E2	E2	E3	E3	E2	E3	E3	E3	E2	E3	E3
Effect Incisal:	univ			E2		opal	univ			opal	rose		opal				



Lab. Od. Lazetera Antonio - Savona - Italy



The incisal materials E2 and E3 are used for the „free-hand“ and cut-back technique in the visio.lign system. The veneers are reduced, conditioned and the effect incisal materials opal, blue, rose or universal are used in addition to the E2 and E3 incisal materials.

Moreover, the crea.lign stains which feature the familiar material quality extend the application range of crea.lign. Each resin / composite veneer can be customized with the stains. As a result, the combination of the crea.lign incisal materials and modifiers and the university-tested bonding system enables the fabrication of plaque-resistant and discoloration-free individual veneers.



Lab. Od. Lazetera Antonio - Savona - Italy



# The esthetic design and the red-white transition zone



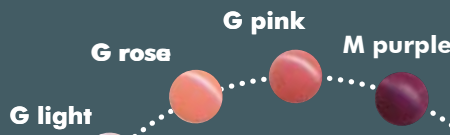
MDT Andreas Lüdtkke, Bayreuth



MDT Andreas Lüdtkke, Bayreuth

One of the key aspects in the esthetic design is the red-white transition zone. visio.lign allows planning and achieving perfect esthetics also in the gingival region.

Thanks to the development of combo.lign GUM, the layering technique can also be used in the gingival region. This way large gingival areas can be efficiently modelled on metal, zirconium and composites. Direct application is possible thanks to premixing in the cartridge; dual-curing guarantees reliable polymerizing and superior bonding values.



The different colors of the GUM materials in the visio.lign veneering system result in a life-like appearance of the gingiva.

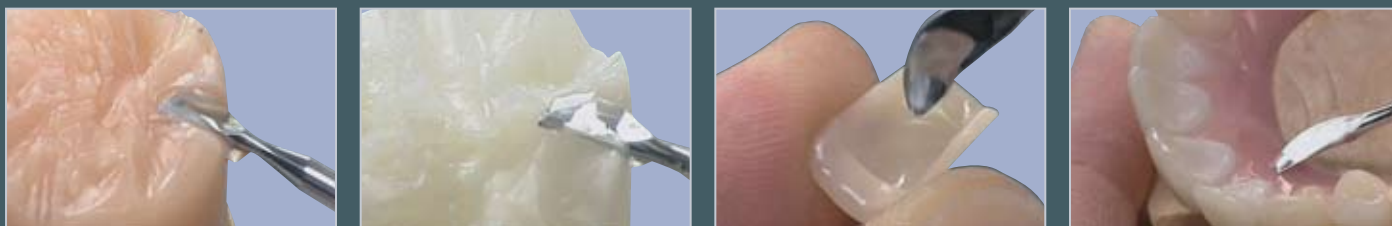
Lab. Od. Lazetera Antonio - Savona - Italy  
Dott. Vescia Luca - Villa Dossola - Italy



crea.lign is also suited for individualizing denture base materials. The crea.lign Modelling Liquid allows to achieve homogeneous transition (adjustment of elasticity and hardness) to PMMA-based denture base materials. Reliable bonding to all PMMA- and composite materials is accomplished with visio.link.

Up to 30 % of crea.lign Modelling Liquid can be mixed with crea.lign and permanent resistance to discoloration and plaque is ensured. The liquid is polymerized in the same ways as crea.lign.

## Esthetics guaranteed - from the setup to the definitive veneer



Planning of the dental restoration starts with a natural arrangement including the veneer-up and the selection of design, shade and the position of the tooth/teeth. The patient is given a clear „preview“ of his definitive restoration thanks to the use of the esthetic novo.lign veneers and beauty setup, the esthetic add-on wax. By mixing the light and dark shades, all classical A-D shades can be reproduced.

### beauty setup - what you see is what you get



The esthetic try-in, important for the coordination and determination of all esthetic design options for the definitive restoration.

It is the key to predictable esthetic and hence to patient satisfaction. The use of the visio.lign system allows to achieve full reproducibility of the definitive restoration.



Lab. Od. Lazetera Antonio - Savona - Italy  
Dott. Vescia Luca - Villa Dossola - Italy

# Metal-free restorations – PEEK high-performance polymer and zirconium



## Compatibility:

### Resin, composite & Bio XS – veneers

Resin or composite framework materials feature higher elasticity and lower flexural strength than metal frameworks.

- Perfect modelling of the framework is achieved with visio.lign. Top-quality veneers can be achieved by an esthetic, top notch layering technique and little space is required.
- visio.link, the primer and bonder in one, convinces by outstanding bond strength in combination with all three material groups: PMMA, composites and Bio XS.
- Adhesive bonding with combo.lign protects the veneer thanks to high wettability and E-modulus, reduces the deflection and protects against chipping or fracture.



PEEK bonding agent

## Compatibility: Zirconium – Veneers

Zirconium dioxide is clearly harder than metal. After veneering with ceramic, the total structure causes an excessively hard occlusion and is exposed to the risk of chipping and may lead to temporomandibular problems.

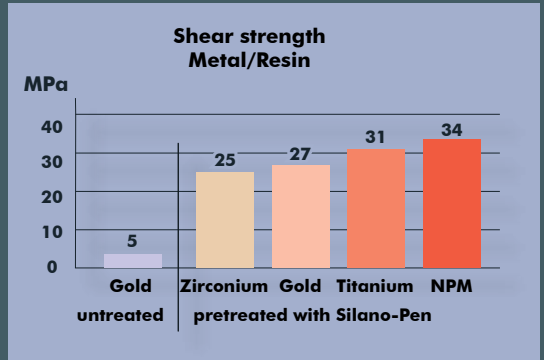


MDT Andreas Lüdtkke, Bayreuth

- When using visio.lign, veneering of the zirconium is carried out using a bonding system tested at universities. A durable veneer with materials featuring high impact strength and clearly higher elasticity is only achieved by chemical bonding to zirconium dioxide.
- No excessively hard occlusion, protection of the opposing jaw, antagonist teeth and the temporomandibular joints.
- No chipping and no discoloration; same plaque resistance as natural teeth.
- Can be extended and is very reliable especially for implant restorations.



Currently, the Silano-Pen provides the only method in which all framework materials made of metal or zirconium (zirconium oxide, aluminum oxide, glass and feldspar ceramics) can be conditioned for bonding to resins / composites and bond strength values of at least 25MPa (compression shear strength) can be achieved.



# Implant prosthetics



The SKY fast & fixed system is a prosthetic concept for immediate restoration of edentulous patients. The use of visio.lign veneers creates a predictable, esthetic result. Esthetics, reliable bonding and shade stability as well as tremendous reduction of working time and costs can be effectively combined in implant prosthetics. When using this treatment concept, the resulting price advantage can be passed on. This way new target groups for implant prosthetics can be reached.



From the veneer-up to the definitive veneer - a practical case documented at the IFZI Nürnberg. The film is available as a DVD.



The modular principle. New ways in the treatment concept for patients wishing to have a fixed bridge on implants. Lower price (up to 50 %) than a comparable metal-ceramic bridge. .  
QS 34/ July 2008

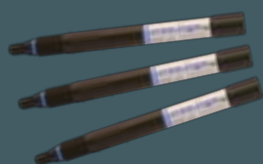
# Overview of new products



opaquer combo.lign	REF
opaquer light A1, A2, A3, B2, C2	CO1X4OPL
opaquer medium A3,5 / B3 / D3	CO1X4OPM
opaquer intensive A4 / C3	CO1X4OPI
Catalyst paste	CO1X4KAT
opaquer GUM	CO1X4OPG



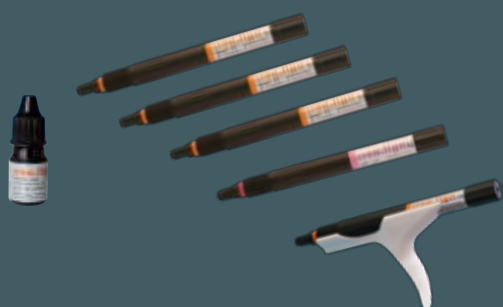
crea.lign Dentin	REF
DBL3 (Bleach)	CLFNDBL3
DA1	CLFNDA10
DA2	CLFNDA20
DA3	CLFNDA30
DA3,5	CLFNDA35
DA4	CLFNDA40
DB2	CLFNDB20
DB3	CLFNDB30
DB4	CLFNDB40
DC2	CLFNDC20
DC3	CLFNDC30
DD3	CLFNDD30



crea.lign Incisal	REF
I universal	CLFN00I4
I opal	CLFN00I1
I blue	CLFN00I2
I rose	CLFN00I3
E2	CLFN00E2
E3	CLFN00E3



crea.lign Gingiva	REF
Gum light	CLFN00G1
Gum rosa	CLFN00G2
Gum pink	CLFN00G3



crea.lign Modifier	REF
Modifier beige (Dentin)	CLFN00M1
Modifier oliv (Dentin)	CLFN00M2
Modifier caramel (Dentin)	CLFN00M3
Modifier lila (GUM)	CLFN00M4
crea.lign Modelling Liquid	CLFMOD10
combo.lign GUM	CO2X4GUM

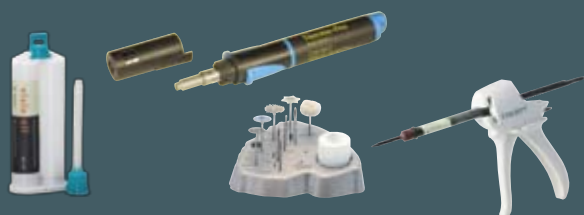
Grip for one-hand use	REF
	320 0044 2



crea.lign Stains	REF
orange	CLFN00S1
brown	CLFN00S2



Beauty setup wax, tooth-colored	REF
beauty setup light	430 0030 0
beauty setup dark	430 0031 0



Complementary products and solutions	REF
Silano-Pen	320 0047 0
Thermo-Pen	110 0147 0
visio.sil	540 0120 0
visio.sil fix	540 0130 0
visio.lign Toolkit	VLTOOLKIT
Dispenser 5 ml 1:1 (for combo.lign)	320 0044 1

bredent

GmbH & Co.KG · 89250 Senden · Germany · Tel. (+49) 0 73 09 / 8 72-4 40 · Fax (+49) 0 73 09 / 8 72-4 44 · www.visio-lign.com · e-mail info@bredent.com

06/11 294 GB Subjects to changes

