

IPD solutions for your workflow

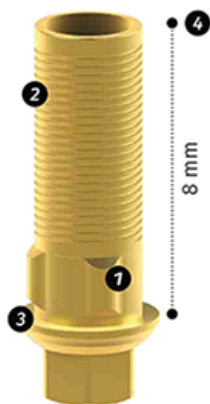


Custom Interface Ti-base System

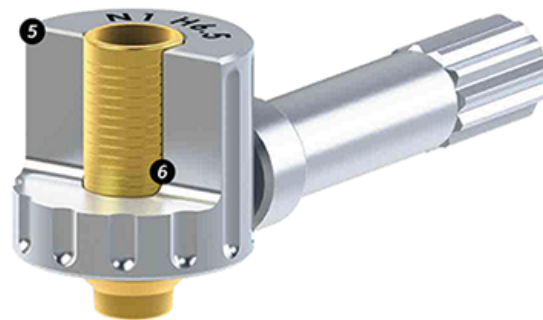
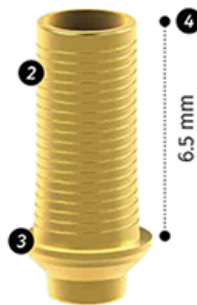
Get to know the new design

- New Single position asymmetrical, tri-lobe, engaging design.
- **Easier to mill** geometry.
- **Spiral grooves** for improved retention.
- **Larger surface area for the prosthetic restoration** to avoid insufficient thickness depending on the materials used.
- **3 different platforms: Narrow, Regular and Wide.** The emergence profile can be reduced from the implant platform to the base of the prosthetic restoration.
- **Adjustable height:** with 8mm as standard for engaging versions and 6.5 mm for non-engaging.
- The recess for the angled screw channel can be adjusted to all available heights, for both engaging and non-engaging.
- **CAD/CAM libraries** are available for all variations.
- Different gingival heights for up to 3.5 mm.
- Cutting guides with fixation screw facilitate cutting and milling.

- 1 Trilobular engaging design
- 2 Helical grooves
- 3 Larger support surface for the prosthesis
- 4 Adjustable height
- 5 Recess for ASC at all available heights
- 6 Cutting guides



Engaging Ti-base



Non-engaging Ti-base

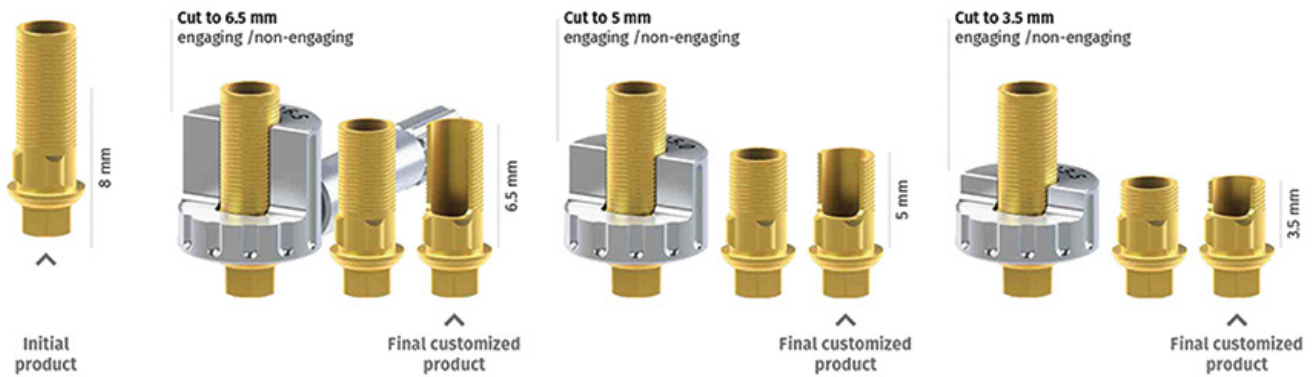
IPD solutions for your workflow



Engaging Ti-base

With a height of 8 mm, the engaging Ti-base can be trimmed to several levels (6.5 mm / 5 mm / 3.5 mm), depending on the requirements for each task.

Adjusting the height is practical and simple using the cutting guides and fixation screw, making it possible to create the recess for the angled screw channel for every available height from 6.5 mm.



Non-engaging Ti-base

With a standard height up to 6.5 mm, the non-engaging Ti-base can be trimmed to various levels (5 mm / 3.5 mm). The height can be adjusted in the same way as the engaging Ti-base, depending on the requirements of each case, using the cutting guides and the transverse fixation screw.

The recess for angled screw channel can also be prepared for every available height.

