

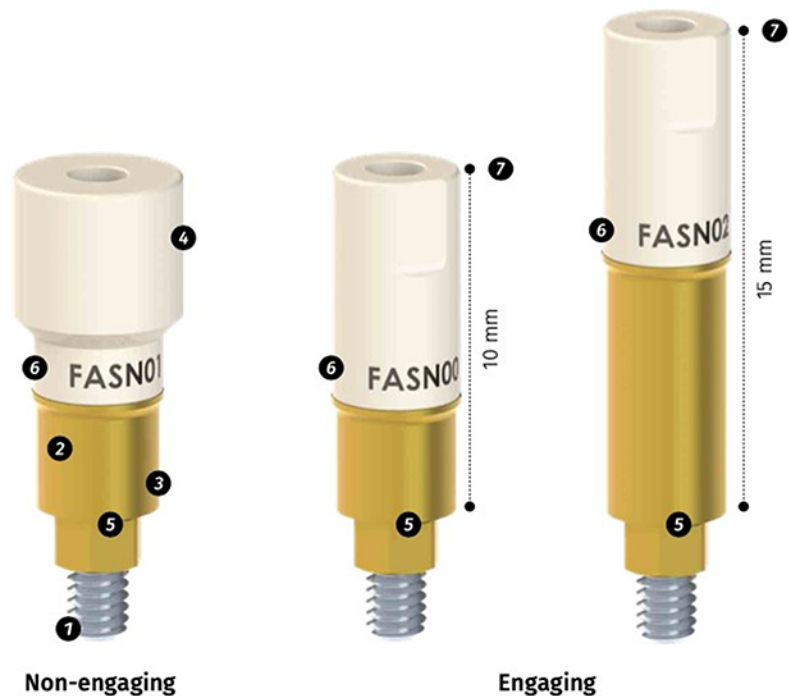
# IPD solutions for your workflow



## Scan Abutment

- Compatible with intraoral systems (clinical) and with desktop systems (laboratory).
- Also compatible with the Renishaw® probe system.
- It includes a captive screw to prevent loss and make it easier to mount.
- The TiN coating offers antibacterial properties to protect the gingiva.
- The Titanium base ensures a long-lasting connection and enables the use of Rx.
- The top section is made of PEEK, a polymer that favours implant reading and location.
- Maximum Z-precision, as it rests on the sagittal plane of the implant or analog.
- A tolerance of  $\pm 5$  microns throughout the entire manufacturing process.
- Reference engraved by laser etching.
- 2 heights for engaging: 10 mm for most cases, and 15 mm for situations involving a very deep implant.

- 1 Captive screw
- 2 TiN coating
- 3 Titanium base
- 4 Upper portion of the abutment in PEEK
- 5 The highest possible precision on the Z-axis
- 6 Laser etched
- 7 2 heights for engaging versions

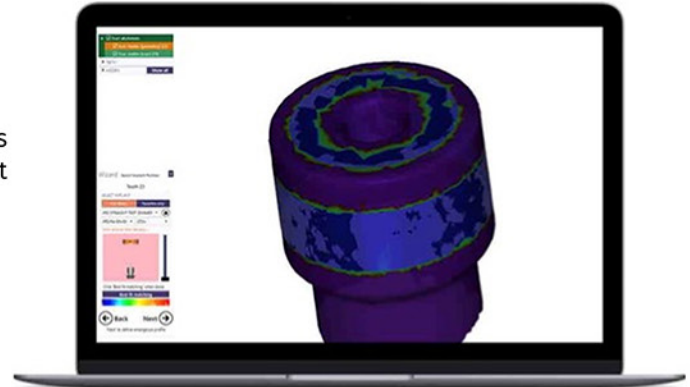


# IPD solutions for your workflow

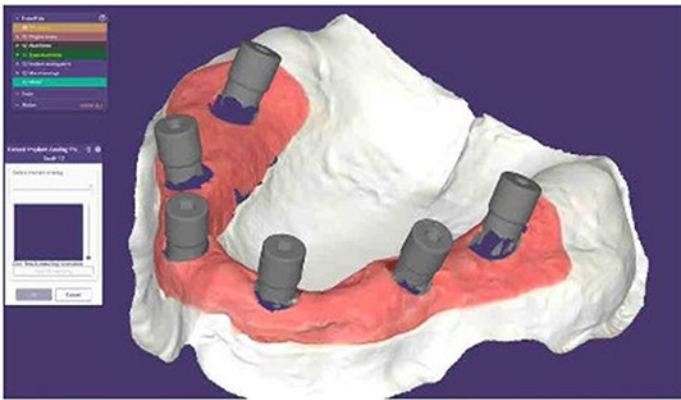


## Correct best fit

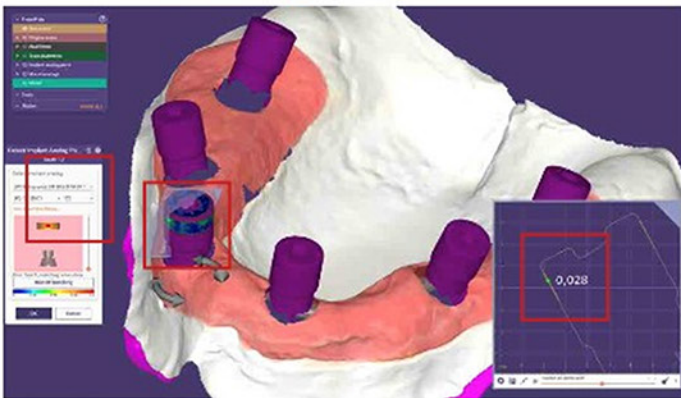
Our CAD libraries have up to 7 different Scan Abutment tolerances and adapt to the accuracy of each type of scanner on the market today.



## Scanned model



## Nok. Best fit with wrong tolerance



## OK. Best fit with optimal tolerance

