

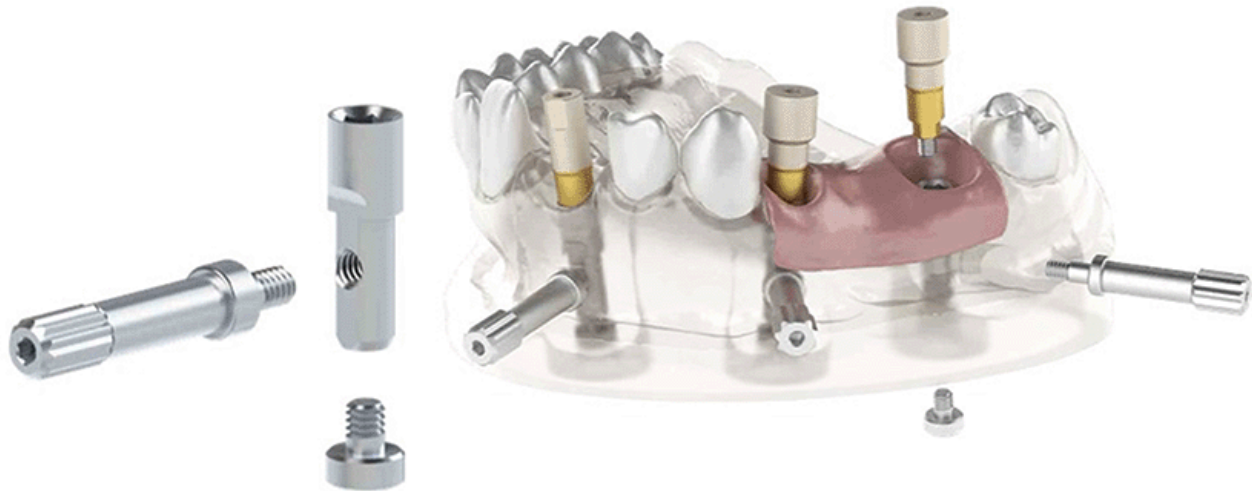
# IPD solutions for your workflow



## Digital Analog

The innovative design of our Digital Analog, with two fixation screws, ensures the exact positioning of the Analog in a 3D printed model. The two fixation screws ensure that the Analog is in the correct position with one located laterally and the other positioned at the bottom of the 3D printed model.

The lateral screw also enables the use of an articulator without loss of the bite registration.

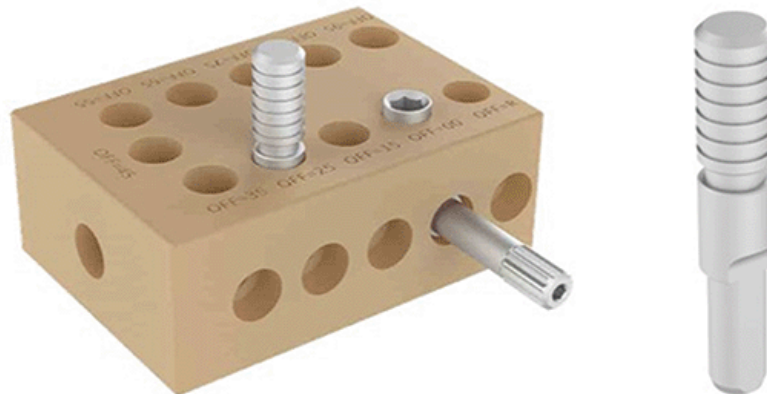


### Validation master

IPD has a **CAD library for a 3D model generator.**

We provide a validation master STL file so that you can check the printing resolution of your 3D printer. Once the tolerance is checked and validated, we will send you a customized CAD Library with optimized parameters. **We have up to 11 CAD library configurations with different tolerances** to ensure it that it will work efficiently with your 3D printing system.

To simplify this process, we also provide you with a digital analogue fixture, that allows you to test the adjustment on the calibration master in a convenient, simple and fast way.



# IPD solutions for your workflow



## Multi-unit system

The Multi-unit system has evolved to offer better features and new functionalities. Find out everything that the Multi-unit system can do to improve your workflow.

### Straight Multi-unit for one-piece abutments

We modify every Multi-unit to incorporate an **engaging design** that is adaptable to one-piece abutments. Thanks to this new functionality, all straight Multi-units can be used to solve cases which require the positioning of a single crown restoration. The corresponding prosthetic components fulfill this new functionality in order to work either analog or digitally. This morphology change does not affect the usual multi-unit procedures.



Engaging  
abutments >



+ Carrier



### Tin

The Multi-unit abutments are coated with Titanium Nitride (TiN). This coating enhances the aesthetics of the abutment with a **gold color**. This visually improves cases where patients have exposure of the trans mucosal abutment, and the case is compromised. It also provides antibacterial properties that prevent the adhesion of micro-particles that could result in soft tissue inflammation. The TiN coating is applied to all straight and angled Multi-units.

### Carrier

The transfer of the abutment to the patient is more convenient with the new carrier for straight Multi-units. It fits securely onto the implant. Every order for a straight or angled Multi-unit comes with a carrier free of charge.